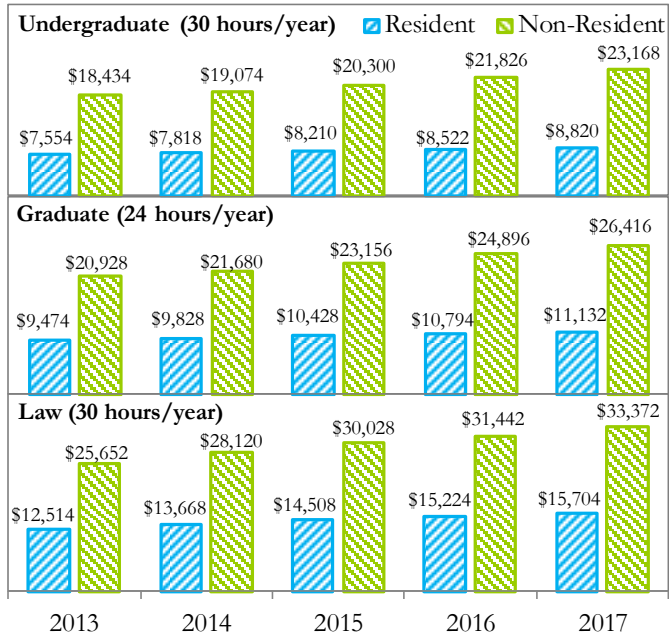


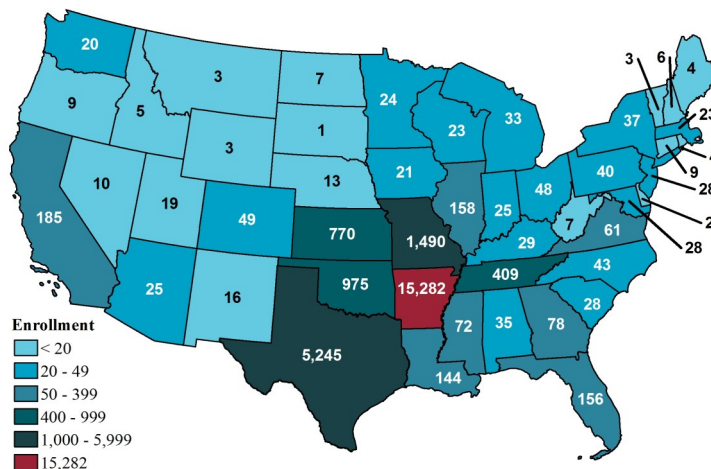
## TUITION AND FEES



## INSTRUCTIONAL FACULTY (FALL 2016)

	Male	Female	Total
<b>Total</b>	<b>795</b>	<b>558</b>	<b>1,353</b>
Full-Time	714	463	1,177
Part-Time	81	95	176
<b>Ethnicity</b>			
African American	18	19	37
American Indian/Alaska Native	3	9	12
Asian	73	34	107
Caucasian	611	415	1,026
Hawaiian/Pacific Islander	0	1	1
Hispanic	18	29	47
Non-Resident Alien	33	18	51
Two or More Races	7	13	20
Unknown	32	20	52
<b>Academic Rank</b>			
Distinguished Professor	35	3	38
University Professor	21	4	25
Professor	220	58	278
Associate Professor	139	86	225
Assistant Professor	154	88	242
Instructor	141	193	334
Lecturer	85	126	211
<b>Tenure Status</b>			
Tenured	401	143	544
On Tenure Track	155	94	249
Not Tenure Track	239	321	560
<b>College</b>			
Agricultural Food and Life Sciences	110	56	166
Architecture	22	12	34
Arts and Sciences	366	274	640
Business	102	44	146
Education and Health Professions	61	125	186
Engineering	108	24	132
Law	26	23	49

## ENROLLMENT BY LEGAL RESIDENCE STATE



*Enrollment not shown on map: Alaska - 6; District of Columbia - 5; Hawaii - 11; US Territory - 1 International - 1,466*

## RANKINGS (public institutions only)

### 2016 U.S. News & World Report

- Supply chain management/logistics (undergraduate) ..... 10<sup>th</sup>
- Supply chain/logistics (graduate) ..... 10<sup>th</sup>
- Rehabilitation counseling (graduate) ..... 12<sup>th</sup>
- Biological/agricultural engineering (graduate) ..... 19<sup>th</sup>
- Online graduate engineering program ..... 25<sup>th</sup>
- Undergraduate business program ..... 26<sup>th</sup>
- Industrial/manufacturing/systems engineering (graduate) ..... 27<sup>th</sup>
- Online bachelor's program ..... 32<sup>nd</sup>
- Graduate business school ..... 34<sup>th</sup>
- Online graduate education program ..... 43<sup>rd</sup>
- Law school ..... 45<sup>th</sup>
- Best colleges for veterans ..... 45<sup>th</sup>
- Online graduate nursing program ..... 54<sup>th</sup>
- ◆ School of Law ranked 5<sup>th</sup> in nation by National Jurist and preLaw magazines' annual "Best Value Law Schools" list (4<sup>th</sup> year in a row in top 10)
- ◆ College of Engineering ranked 19<sup>th</sup> in the 2016 "50 Best Value Engineering Schools" by Best Value Schools
- ◆ Biomedical engineering program ranked 31<sup>st</sup> in the 2016 "50 Best Value Schools for Biomedical Engineering" by Best Value Schools
- ◆ Walton College of Business' undergraduate business programs ranked 34<sup>th</sup> in the 2016 Businessweek rankings
- ◆ Walton College of Business' MBA program ranked 42<sup>nd</sup> in the "List Of The Top 100 U.S. MBA Programs of 2016" by Poets and Quants
- ◆ University of Arkansas ranked 51<sup>st</sup> on the "Best for Vets: Colleges 2017" list in the Military Times
- ◆ University of Arkansas ranked 56<sup>th</sup> in Kiplinger's list of Best Values
- ◆ University of Arkansas listed among 'Best Colleges' in 2017 Princeton Review's annual college guide, "The Best 381 Colleges" (About 15% of America's 2,500 4-year colleges and universities are profiled in the book)

Information compiled by:  
Office of Institutional Research and Assessment  
ADMN 125, Fayetteville, AR 72701  
Phone: (479) 575-5252; Fax: (479) 575-6766  
<http://oir.uark.edu>



# UNIVERSITY OF ARKANSAS

2016 — 2017  
**MINI FACT BOOK**  
<http://oir.uark.edu/factbook.pdf>

## QUICK FACTS

- ◆ Founded in 1871
- ◆ Students, female/male: 52 percent/48 percent
- ◆ Average freshman high school GPA: 3.68
- ◆ Average ACT: 26.0
- ◆ Instructional faculty: 1,353
  - ◆ Full-time: 1,177
  - ◆ Part-time: 176
- ◆ Student-to-faculty ratio: 19 to 1
- ◆ Research expenditures (fiscal year 2015): \$133,354,958
- ◆ Annual University scholarship and fellowship expenditures (fiscal year 2015): \$21,247,744
- ◆ Academic programs: 236 degrees and certificates, with 85 major fields of undergraduate study, 81 master's degree programs, 40 doctoral programs, 2 specialist degrees, and 26 certificates

## Carnegie Classification

**Doctoral University:  
Highest Research  
Activity**

## Fall 2016 Enrollment

**27,194**  
(⬆ by 1.6%, since Fall 2015)  
➔ **22,548 Undergraduate**  
➔ **4,275 Graduate**  
➔ **371 Law**

## PRIDE POINTS

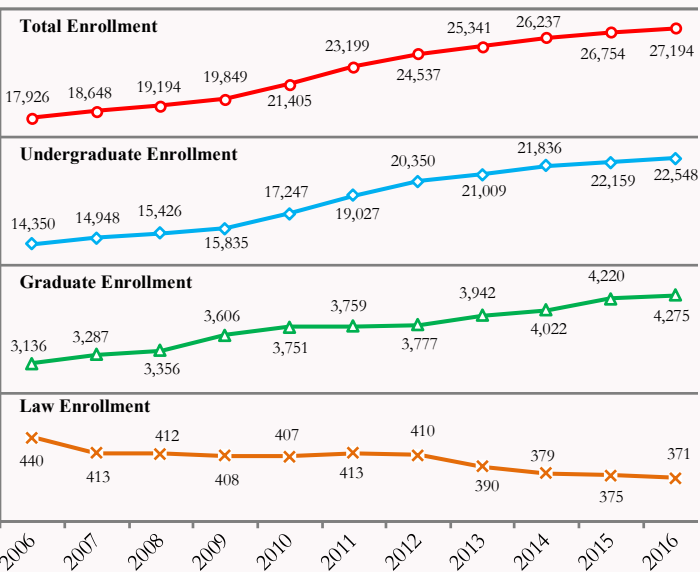
- ◆ University of Arkansas named to the President's Higher Education Community Service Honor Roll in recognition of its' service learning and volunteer service programs, and was listed in the categories of general community service, education services, and economic opportunity services.
- ◆ Prestigious, nationally competitive awards in 2016—1 Gates Cambridge Scholar, 2 Truman Scholars, 2 Goldwater Scholars, 8 NSF Graduate Research Fellowships, 2 Fulbright Scholars, 1 National GEM Consortium Full Fellowship
  - ◆ Goldwater Scholars – All-time total of 52 scholars ranks UA 1<sup>st</sup> in SEC & 16<sup>th</sup> among public universities (21<sup>st</sup> consecutive year with at least one Goldwater Scholar)
  - ◆ Truman Scholars – All-time total of 21 scholars ranks UA 1<sup>st</sup> in SEC & 11<sup>th</sup> among public universities
  - ◆ Rhodes Scholars – All-time total of 10 scholars ranks UA 38<sup>th</sup> among public universities
  - ◆ University of Arkansas among one of six institutions to have multiple Truman Scholarship winners in the 2016, and six students have been named Truman Scholars in the past five years

*The Honor Roll recognizes institutions of higher education that support exemplary community service programs and raise the visibility of effective practices in campus community partnerships. Only about 16% of the schools on the honor roll are recognized in this many categories.*

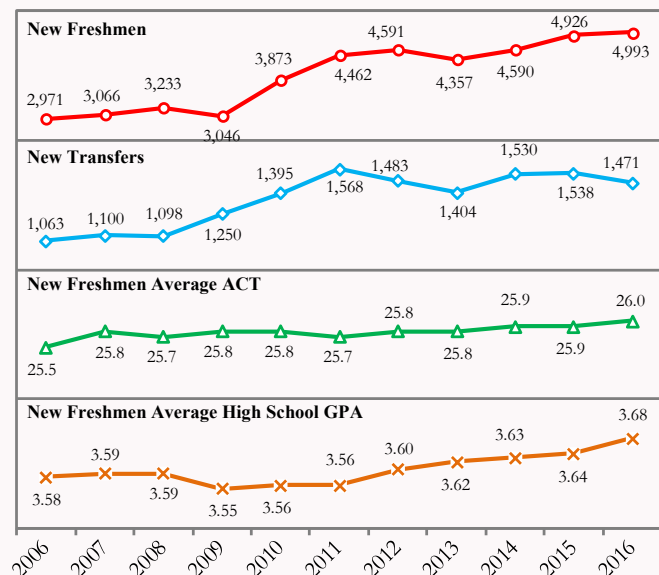
## ENROLLMENT (FALL 2016)

	Undergraduate	Law	Graduate	Total
<b>Total</b>	<b>22,548</b>	<b>371</b>	<b>4,275</b>	<b>27,194</b>
<b>Gender</b>				
Male	10,701	216	2,135	13,052
Female	11,847	155	2,140	14,142
<b>Ethnicity</b>				
African American	1,074	15	219	1,308
American Indian/Alaska Native	243	7	64	314
Asian	551	7	89	647
Caucasian	17,205	297	2,851	20,353
Hawaiian/Pacific Islander	19	-	8	27
Hispanic	1,831	27	208	2,066
Non-Resident Alien	757	3	706	1,466
Two or More Races	751	12	77	840
Unknown	117	3	53	173
<b>Current Legal Residence</b>				
Arkansas Resident	12,772	319	2,191	15,282
Non-Arkansas Resident (U.S.)	9,019	49	1,378	10,446
Foreign	757	3	706	1,466
<b>College</b>				
Agricultural Food and Life Sciences	1,836	-	337	2,173
Architecture	469	-	-	469
Arts and Sciences	7,034	-	898	7,932
Business	5,675	-	457	6,132
Education and Health Professions	4,132	-	1,368	5,500
Engineering	3,335	-	950	4,285
Independent Study	67	-	-	67
Interdisciplinary	-	-	265	265
Law	-	371	-	371
<b>Student Level</b>				
Freshman	6,287	-	-	6,287
Sophomore	4,978	-	-	4,978
Junior	4,861	-	-	4,861
Senior	6,411	-	-	6,411
Master	-	-	2,529	2,529
Doctorate	-	-	1,375	1,375
Professional Year 1	-	123	-	123
Professional Year 2	-	115	-	115
Professional Year 3	-	113	-	113
Master of Law	-	20	-	20
Master's Certificate	-	-	8	8
Graduate Non-Degree	-	-	307	307
Graduate Specialist	-	-	20	20
Undergraduate Certificate	11	-	-	11
Graduate Certificate	-	-	36	36

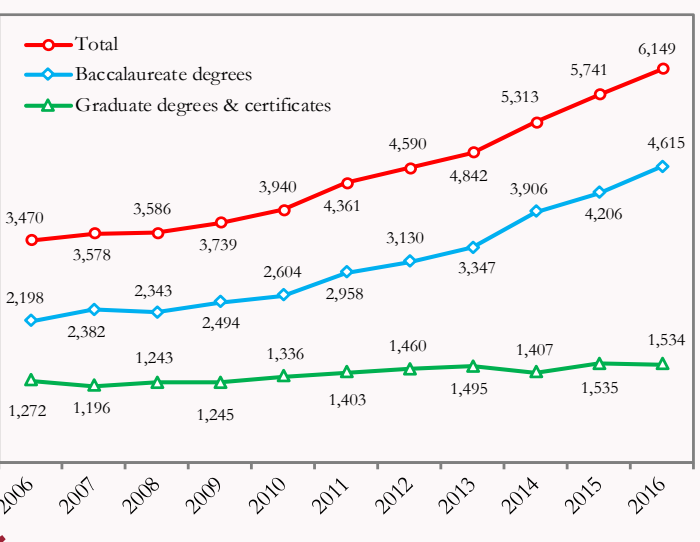
## ENROLLMENT TRENDS



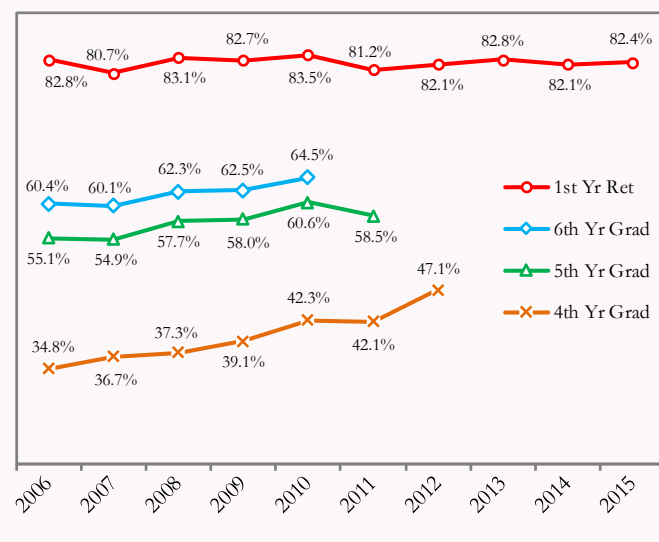
## NEW STUDENT TRENDS



## CREDENTIALS AWARDED TRENDS



## RETENTION AND GRADUATION



## DEGREES AWARDED, 2015-2016

	Male	Female	Total
<b>Total</b>	<b>2,938</b>	<b>3,211</b>	<b>6,149</b>
<b>Level</b>			
Baccalaureate	2,149	2,466	4,615
Master's	606	576	1,182
Specialist	1	6	7
Doctoral - research/scholarship	99	79	178
Doctoral - first professional	61	53	114
Certificate of proficiency	-	1	1
Graduate certificate	21	26	47
Post-master certificate	1	4	5

## DEGREES AWARDED, 2015-2016 (contd...)

	Male	Female	Total
<b>Ethnicity</b>			
African American	120	125	245
American Indian/Alaska Native	31	34	65
Asian	80	77	157
Caucasian	2,254	2,516	4,770
Hawaiian/Pacific Islander	2	1	3
Hispanic	138	185	323
Non-Resident Alien	211	157	368
Two or More Races	91	96	187
Unknown	11	20	31

## DEGREES AWARDED, 2015-2016 (contd...)

	Male	Female	Total
<b>College</b>			
Agricultural, Food and Life Sciences	180	390	570
Architecture	47	48	95
Arts and Sciences	775	1,058	1,833
Business	810	431	1,241
Education and Health Professions	310	1,023	1,333
Engineering	725	180	905
Interdisciplinary	24	34	58
Law	67	47	114